



LYNEHAM HIGH SCHOOL

Care • Quality • Creativity

PRINCIPAL
ROB EMANUEL

Friday 2 August 2019

#11 Newsletter



ACT
Government
Education



*Lyneham High School is built on the traditional lands of the Ngunnawal people.
We acknowledge the traditional owners of this land and pay our respects
to their elders, past, present and future.*



What's on at Lyneham

WEEK 3, 5 August - 9 August

Monday 5 August

⇒ Year 10 Careers Talk

Tuesday 6 August

⇒ Year 10 Careers Conversations

Wednesday 7 August

⇒ Year 10 Careers Expo

Friday 9 August

⇒ Year 10 Careers Conversation

WEEK 4, 12 August - 16 August

Thursday 15 August

⇒ Year 9 Big Day In

Important Change to Lyneham High School Absences

At the end of August the **Lyneham High School Mobile App** will be discontinued due to the platform shutting down. A new platform will be introduced in the near future.

To advise of a student absence please use email LynehamHS.absences@ed.act.edu.au, ring the front office on 6142 1174 or send a note to the front office with the student.

From the Principal

Welcome back to term three. Rob Emanuel has been unwell and I have been acting Principal this week.

Two weeks into the term, things are back in full swing at Lyneham High.

Staffing changes

There have been staffing changes this term due to leave being taken by staff:

- Aisling Murtagh – acting Deputy Principal (Staff)
- Luke Coleman – acting Executive Teacher Mathematics
- Tim Bowyer – acting Executive Teacher – Arts
- Ryan Nakkam – new teacher in HaSS
- Raewyn Tuffery – new teacher in Science



We also welcomed our School Youth Health Nurse, Julia Larby. Julia's position is funded by ACT Health. Julia will be working at Lyneham HS on Monday and Tuesday and compliments our student support team alongside Trevor (Youth Support Worker), David (Menslink Counsellor), and Jo and Liz (School Psychologists). For more information about the services that Julia brings to our school community, please see later in this newsletter.

This newsletter also contains information on the mobile dentist program that has been organised to visit the school in week 8. There has already been a strong uptake for this program.

Reports

Parents should have received end of semester school reports before the holidays. Please ensure you understand the grading system for reports, as indicated on the last page of the reports. A 'C' grade indicates that your child is at standard in their learning for this subject. I have also attached an information sheet for parents relating to the new ACT Education Directorate standard reports that will be issued to all students at Lyneham HS at the end of this semester. These reports will contain similar information but will look different to the reports we've issued in the past. A reminder to parents that as most correspondence, including school reports are emailed to parents, it's important that we are notified if your email address changes.

Satisfaction Surveys

School Satisfaction Surveys are coming up again and provide our school with rich data on how we are tracking in all areas relevant to our strategic plan. I encourage you to complete the parent survey that will be sent to all families in week 4 (13 August). This is a tangible way of contributing to the on-going priorities of our school. This newsletter contains a letter advising student participation in the survey, and arrangements should you wish to withdraw your child/ren.

P&C Parent Forum

The P&C will meet on Tuesday next week (6 Aug) at 7.30pm. Prior to this meeting there will be a parent forum on how we cater for students in mixed ability classes. Work samples will be shown, and some of the work currently being done by teachers in this field will be discussed. Please note that entry to the building will be from the southern carpark and not the front entry to the school.

I encourage you and your children to be as involved as possible in all the upcoming school events during term three.

Julie Collins - Acting Principal



Well done Year 9 Concert band! What a great assembly performance to start off the semester. We can't wait to hear you perform at your Farewell Concert next week



Extra-Curricular Groups

Extracurricular ensembles are back to rehearsals for Semester 2, and there is still time to join. Please see the relevant teacher as soon as possible if you would like to be part of one of these ensembles.

Activity	Rehearsal times	Teachers
Intermediate Jazz Band (years 7 & 8 who are already in a concert band)	Wednesday 8:00 – 8:45am	Jenny Tabur, Sophie Raudonikis, Jason Peters
Senior Jazz Band (years 9 & 10 who are already in a concert band)	Thursday 8:00 – 8:45am	Tim Bowyer, Fran Nagy
Vocal Group (all years & do not have to be in a concert band)	Tuesday 8.00-8.45am	Debbie Masling, Jenny Tabur, Galen Ashley
Lyneham High Voices	Friday 8.00-8:45am	Tobias Cole

Return of Borrowed Band Uniforms

Over the last semester we have loaned a significant number of band shirts and caps to students and not all of these have been returned. In order for us to continue to support students by having spare uniforms, we ask that the borrowed items be washed and returned as soon as possible. This will be even more important as we head into touring season. Thank you for your assistance with this.

LPAC Rocks!

Our annual 'Battle of the Bands' is coming back, this time with a fresh new name and idea. 'LPAC Rocks' is a great opportunity for all of our student bands to get together and show what they have been working on. It is will a non-competitive and supportive environment and give a great performance opportunity for students. LPAC Rocks will be held on Tuesday 27 August starting at 4pm. If you are interested in playing, please see your Performance Music teacher or see Ms Nagy and Mrs Raudonikis if you are not in performance music this semester.

Year 9 Farewell Concert

The Year 9 Concert Band will head off on their Melbourne tour in only a few short weeks. Before they depart, they will perform their repertoire for their friends and family and the final tour information will be shared.

Students will need to arrive for the concert at 4:50pm, and doors will open for audience at 5:20pm. The concert should conclude around 6:15pm. All are welcome to attend and hear the Year 9 Band play, we hope to see you there.



Year 9 Concert Band

REMINDER
Farewell Performance

Thursday August 8, 2019

Musicians arrive 4.50pm
Doors open 5.20pm
Concert starts 5.30pm
Concert concludes 6.15pm approx.



*Wear full band uniform
Remember to invite your family and friends*

English news

On Wednesday 31 July a group of year 10 students enjoyed a presentation by slam poet Zohab Zee Khan. He talked about his experiences growing up in country Australia and how he coped with teasing and prejudice, as well as his work as a poet. In this interactive presentation, students helped him create poetry as spoken word texts.



French at Lyneham

It is time to say adieu to our six fabulous **exchange students from Grenoble** - Anais, Eloise, Karla, Maud, Sacha and Bastien. Hosting them at Lyneham High has been a wonderful inter-cultural experience. It has also benefitted other students in their classes, as we have been able to practise our French and ask questions about France.

On Thursday evening, a **pot luck dinner** for students and parents was held. This Fabulous evening also served as the students formal farewell. Congratulations to them all and their families, for making this experience such a success for everyone. Our students have now reached an **outstanding level of spoken French**, as a result of all this exposure to the language. We thank the French students for travelling all this way and wish them luck with their continuing studies at school and university.

The photo below of Karla Fouquet, Anais Civario, Sacha Burtin and their host sisters in Year 10 Sophie Heinsohn, Ellen Vahey and Tessa Ballard was taken after our **franco-australian picnic**. Olivia Barker and Inga Webber in Year 9 were also able to join in and find out about life in France.

On Tuesday 13 August, an excursion for all years to the National Gallery will be held to see the **Monet** paintings. Stay tuned for the next upcoming **Noumea 2020** meeting to be held soon.



School Satisfaction Survey

Parents and carers, school staff and students will be asked to participate in these important surveys. The survey results will contribute to school research and improvement processes.

Although the survey is voluntary, we hope you will want to participate. It won't take much of your time and will help us improve our school for your child and future students. An email about the parent and carer survey will be sent to you in August. [The key ACT results from the 2018 School Satisfaction Surveys have been published on the Education Directorate website \(www.education.act.gov.au\)](http://www.education.act.gov.au) and a summary of our school results is provided in our 2018 School Board Report.

Careers News

Year 10: An email was sent to Year 10 parents/carers earlier in the week highlighting a number of events occurring for Year 10 students. Please check out the following link to see the latest dates/ details- <https://sites.google.com/ed.act.edu.au/lhstransitions/home>

CareersXpo see attached flyer. All Year 10 students will attend with the school on Wednesday 7 August. There is an afternoon session if you are interested in going after school.

ACT Property Council Girls in Property. Any Year 9 or 10 girls interested in a career in the property industry have the opportunity to attend a series of workshops and seminars at this event in September. Interested students should talk to Ms Dashwood.

ANU Pacific Day. Students in Year 10 are invited for a 'day in the life' at ANU on Friday 16 August to explore subjects in the Asia Pacific area. Interested students should talk to Ms Dashwood or Ibu Kirrilly.

Master Builders ACT will open its doors on Saturday 24 August 10am – 2pm for the 2019 Master Builders Open Day. If you would like more information on becoming an apprentice with the MBA, [please click here.](#)



Year 10 student Chandler Leydon on Work Experience with Rojas construction



Congratulations to Year 9 student Ella Pulsford (9) and Year 10 student Amelia De Klerk (pictured above) on completing a Certificate III in Makeup vocational course (VLO) at CIT last semester.

Writers' Camp

The Languages faculty is offering students from all years the opportunity to participate in a Writers' Camp in week six of this term. The camp has run for the last three years and we are keen to continue this enriching experience.

Four guest speakers have been organised to undertake targeted workshops for our students including an exciting opportunity to look at journalism with Tim Bull (aka Tim the Yowie Man) and horror writing with Kaaron Warren.

Any queries please contact Yolanda Hallam-Walsh in Languages.

Email: yolanda.hallam-walsh@ed.act.edu.au

Phone: 6142 1185

When: 28 – 30 August 2019

Where: Warrambui near Murrumbateman NSW

Cost: \$275

Permission notes available from English teachers and outside the Languages staffroom, or from the website http://www.lynehamhs.act.edu.au/notes_homes. They are due by 22 August 2019.

The published writers presenting include:



Kaaron Warren



Russell Kirkpatrick



Tim Napper



Tim, the Yowie Man

FREE DENTAL SERVICE at LYNEHAM HIGH

This term Lyneham High School will host Dental Medical Mobile Services Group who will offer FREE dental treatment to students from families that are enrolled in Medicare and currently receive Family Tax Benefit Part A.

Services will also be available to students who do not qualify at a discounted rate.

The service will be available at school during week 9 (Monday 16th Sept- Friday 20th September)

The program involves:

- Dental education about oral hygiene and the importance of maintaining great oral health
- Comprehensive oral examination
- Scale, polish and clean
- Topical application of Tooth Mousse (decay prevention)

To be eligible for CDBS:

- Children must be aged between 2 to 17 years old
- Must be enrolled in Medicare
- The family must receive Family Tax Benefit Part A

If the child is NOT eligible for CDBS they:

- Can participate in the dental education
- Can receive the Dental Service at a discounted rate of \$79.00
- If requested receipt can be given to claim on private health insurance.

Bookings will be required to access this service using the consent form separately emailed to families and returning it to the Lyneham High School office.

For further information contact DMMSG on 02 8631 2415, or speak to our Youth Support Officer Trevor Preston on 61421167.

Liability for the Loss, Damage or Theft of Students' Personal Property at School

Parents and students are advised that Lyneham High School staff will take all reasonable steps to keep personal property safe. However, Lyneham High School does not provide insurance cover to automatically compensate for the loss, damage or theft of bicycles or any other personal property nor will they be legally liable for their loss.

Parents and students are advised:

- to avoid bringing valuable property to school,
- to take steps to insure all valuable items for loss, theft or damage,
- to use a good quality chain or bar lock to secure bicycles when left at school,
- that valuable items are brought to school at the personal risk of the owner and that schools decline any responsibility for the damage, loss or theft of students' personal property, and
- to report any suspicious activity to school staff.

P&C Corner

Please join us for a Parents Forum at 6.30pm on Tuesday 6 August in the school library on differentiated learning with some examples from Executive Teachers in Maths, followed by the P&C at 7.30pm. All parents and carers of students, and people who live or work in the local community, are welcome.

Online Chromebook Purchasing Portal

Datacom have developed an online portal to allow parents and care givers of existing students to purchase replacement accessories for their child. GST inclusive pricing is:

Stylus: \$63.70

Type-C Adapter and power cable: \$77.43

Details required to access the parent portal:

URL: <https://myschoolshop-act.datacom.com.au/byod>

Username: byod

Password: byod

If your device has been damaged, please see Mr Meldrum in the Library as the device will be fixed or replaced free of charge.

Please contact philip.meldrum@ede.act.edu.au if you have any questions.

The portal is operated by Datacom and is independent of the TEL Program, the Education Directorate and the ACT Government. Devices purchased through the portal are like any other BYOD device and are covered by existing BYOD policy. Any applicable warranty claims are to be processed by parents directly with Acer, with further information and relevant contact details provided under the Warranty Support option on the portal.

School Youth Health Nurse

Hi to all the students and staff at Lyneham High School,

My name is Julia Larby, and I have recently started working at LHS as the School Youth Health Nurse.

What does a School Youth Health Nurse do?

I can provide support, information and referrals in regards to mental health, personal or family issues, drug and alcohol, sexual health and relationships, and other health issues.

A little about me – I have worked as a Registered Nurse for 13 years, including 7 years at a drug and alcohol detox and rehab centre for women, and two years working in Youth Health in Sydney. I moved here from Sydney at the end of last year and have been loving Canberra life!

I will be at LHS on Mondays and Tuesdays. I would love to meet you and have a chat!

Come down and see me in my office at Student Services (in the same area as Trevor's office). Or chat to any of the staff in the Wellbeing team about making a time to see me.

Julia

School Youth Health Nurse

HEALTHY SCHOOL COMMUNITIES

The School Youth Health Nurse works with the school community on issues that may affect the health and wellbeing of young people and the school community as a whole. The School Youth Health Nurse is often the first point of contact for young people, their families and school community members seeking information, advice and support in health matters.

The School Youth Health Nurse

- ✓ Provides a confidential environment to discuss health concerns
- ✓ Promotes health and wellbeing
- ✓ Creates a supportive, healthy school environment
- ✓ Connects people with other support services

The School Youth Health Nurse can provide health and wellbeing support regarding:

- ✓ Mental Health
- ✓ Personal or family issues
- ✓ Smoking, alcohol and other drugs
- ✓ Sleep, healthy eating and physical activity
- ✓ Sexual Health and relationships
- ✓ Adolescent development

CONFIDENTIALITY

Young people have a right to confidentiality when accessing health services. As a Canberra Health Service provider the School Youth Health Nurse respects this but there are some things which the nurse must refer or act upon. If you as the parent would like to discuss this further with the School Youth Health Nurse, please contact the school.

In most cases it is best for young people to talk to their parents about health and wellbeing issues. The School Youth Health Nurse can support young people to do this.

THE SCHOOL YOUTH HEALTH NURSE DOES NOT PROVIDE

- Treatment such as medication, injections and first aid
- Physical examinations
- Ongoing counselling for psychological problems

SYHN are employed by the Canberra Health Service Women Youth and Children Community Health Program. For more information go to: <https://healthhub.act.gov.au/about-us/canberra-health-services/women-youth-and-children/community-health-programs>

2019 Canberra CareersXpo



You are invited to the 2019 CareersXpo! This year we will be exploring sustainability and showcasing the skills and jobs related to a more sustainable future.



WHERE: Exhibition Park in Canberra
WHEN: Tuesday 6 August, 9.15am to 2.30pm and 5.00pm to 7.00pm
Wednesday 7 August 2019, 9.15am to 2.30pm

For more information please contact Beth Peters at beth.peters@act.gov.au

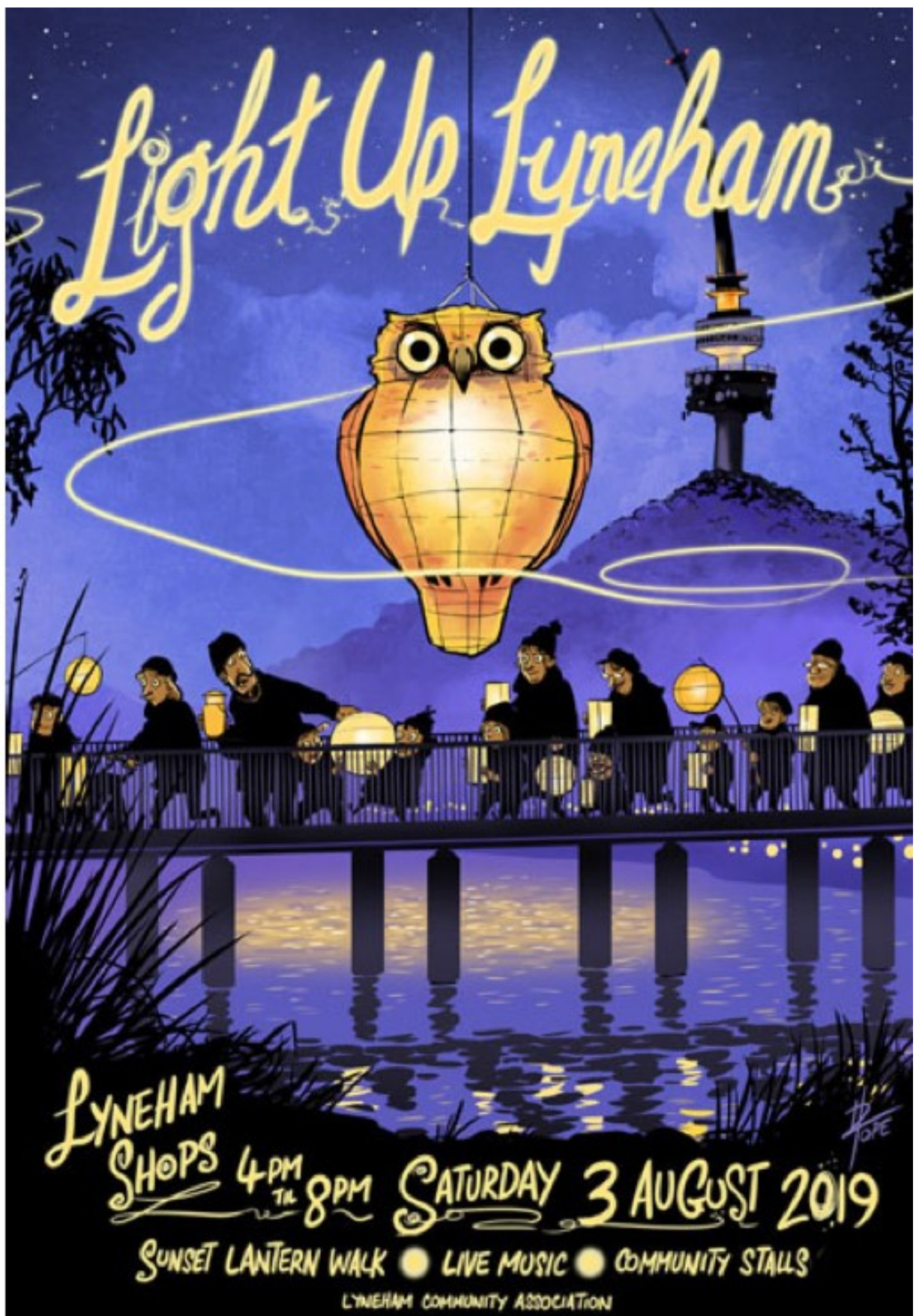


2019 CANBERRA
CAREERSXPO
A joint ACT, NSW, VIC & QLD initiative



real skills for
real careers





Disclaimer

Information provided by outside entities is not endorsed or recommended and is not guaranteed correct, by the school, its staff or the ACT Government.

Reporting Student Achievement in ACT Public Schools

The ACT public school system has a tradition of excellence in education and is a national leader in the implementation of the Australian Curriculum. The introduction of the Australian Curriculum and the use of common Achievement Standards to measure children's learning has improved the already high levels of parent confidence in our schools. Reporting using the Achievement Standards will build on the ACT's strong tradition of providing families with detailed information on the progress of their children.

Under ACT and Commonwealth legislation and regulations all schools are required to provide written reports of student achievement twice a year to parents of students in Preschool to Year 12. In the past there have been school-based formats for students in preschool – Year 10. All Year 1-12 students are required to receive grades using an A-E scale.

In 2019 the Education Directorate are introducing a common report format, for students in Kindergarten to Year 10, through the new Student Administration System (SAS). This change will occur via a staged implementation process, with some schools piloting the new report format in Semester 1, 2019.

What is the same?

All reports to students from Kindergarten to Year 10 have always included and will continue to include the following information:

- academic achievement in relation to the prescribed ACT curriculum and associated achievement standards for each subject studied
 - for students in Kindergarten, a five-point scale is used to indicate academic achievement
 - for students in Years 1 to 10, a five-point A-E scale is used to indicate academic achievement
- for students in Years 1 -6, student effort in each learning area
- for students in Years 7-10, work habits in each learning area
- personal and social capabilities

A college-based format remains in place for students in Years 11 and 12 and is governed by the Board of Senior Secondary Studies (BSSS).

Preschool reports will continue to be provided using a school-based report format.

What is different?

Previously school-based reports have allowed schools to make decisions regarding the detail included against a learning area. For example some schools reported against English using the different strands e.g. writing, reading, viewing, listening and speaking. Whilst some other schools reported against English using school generated outcome statements.

The new system report format uses information directly from the subject area Achievement Standards outlined in the Australian Curriculum. Achievement Standards set the goal for what all students should learn as they progress through their school life. From the first year of schooling to Year 10, students develop knowledge and skills in eight learning areas:

- | | |
|---------------------------------------|---|
| ➤ English | ➤ The Arts |
| ➤ Mathematics | ➤ Technologies |
| ➤ Science | ➤ Languages |
| ➤ Health and Physical Education (HPE) | ➤ Humanities and Social Sciences (HASS) |
| | ➤ |

Each learning areas contains content descriptions accompanied by **Achievement Standards** that describe what students will know and will be able to do as a result of teaching and learning in the classroom. Schools will select when they report against different sentences in the **Achievement Standard**. The new SAS generated report format will help ACT public schools to provide greater consistency when reporting student achievement to families.

The Australian Curriculum is accessible to all students and there is parent friendly information available via the following link <https://www.australiancurriculum.edu.au/parent-information/>

In the ACT, student work at standard is considered a 'C' grade which indicates the student is on track and demonstrating achievement at the standard. A 'C' grade is to be celebrated.

Families will be provided with an opportunity to provide feedback in early term 3.

This is the template for the explanation page that appears at the beginning of all school reports. The contents and overall layout are part of the Directorate template which schools must use. Most of the wording is set in the template, except the areas indicated.

Schools write this section.

About this report

EXAMPLE - This report is designed to give a clear picture of your child's development and achievement in relation to play-based learning and the Australian Curriculum. Every student is unique, with different needs and interests. Teachers use the curriculum to plan in ways that respond to those needs and interests. The Australian Curriculum is flexible, allowing schools and teachers to personalise student learning.

Scale Overview

Your child's achievement for each subject is reported against the Australian Achievement Standards using the following five point scale:

A - Outstanding:	Demonstrating outstanding achievement of the standard
B - High:	Demonstrating a high achievement of the standard
C - At Standard:	Demonstrating achievement at the standard
D - Partial:	Demonstrating partial achievement of the standard
E - Limited:	Demonstrating limited achievement of the standard
S - Status:	Indicates that circumstances have prevented the student from being assessed against the individual achievement standard sentence, or there is insufficient evidence to award an overall grade

Comparison of student achievement in subject/key learning areas

The school's front office can provide you with a separate report containing A-E comparative data. This report will show the number of students in each of the achievement levels from A-E. This report will only be provided for cohort groups of greater than 10 students.

Plan (P) reference

A 'P' indicates that the student has been assessed against an adjusted curriculum based on their learning needs. Their learning sits outside the learning described in their equivalent year level achievement standards.

Personal and Social Capabilities and Habits

Your child's capabilities for social awareness and social management, self awareness and self management as well as work habits are reported using the following 4 point scale:

C - Consistently:	Consistently demonstrates the habit/capability
U - Usually:	Usually demonstrates the habit/capability
S - Sometimes:	Sometimes demonstrates the habit/capability
R - Rarely:	Rarely demonstrates the habit/capability

Attendance for 04/02/2019 - 05/07/2019

Whole Days Absent	0	Partial Days Absent	0
Explained Whole Days Absent	0	Explained Partial Days Absent	0
Unexplained Whole Days Absent	0	Unexplained Partial Days Absent	0

These sections are provided by the Directorate and detail how to read and understand different parts of the report.

This section provides information about the child's attendance and is filled based on school attendance records.

Schools may select to write this section to outline the work covered.

Mathematics

Grade: B

Schools can choose to include a short description of the course or work covered in the learning area. This is optional.

Amelia...

	Status	Limited	Partial	At Standard	High	Outstanding
Solves problems involving the comparison, addition and subtraction of integers				✓		
Makes the connections between whole numbers and index notation and the relationship between perfect squares and square roots					✓	
Solves problems involving percentages and all four operations with fractions and decimals				✓		
Compares the cost of items to make financial decisions						✓

Work Habits	R	S	U	C
Effort in Learning Area			✓	
Is punctual to class				✓
Works cooperatively		✓		
Completes and submits work on time			✓	
Respects others' right to learn				✓
Is appropriately prepared for lessons			✓	
Works independently			✓	

R = Rarely, S = Sometimes, U = Usually, C = Consistently

Teacher Comment

Lorem Ipsum is simply dummy text of the printing and typesetting industry. Lorem Ipsum has been the industry's standard dummy text ever since the 1500s, when an unknown printer took a galley of type and scrambled it to make a type specimen book. It has survived not only five centuries, but also the leap into electronic typesetting, remaining essentially unchanged. It was popularised in the 1960s with the release of Letraset sheets containing Lorem Ipsum passages and more recently with desktop publishing software like Aldus PageMaker including versions of Lorem Ipsum.

Teacher: William Sheppard

This is the template for a learning area page. The overall layout is set in a Directorate template and includes a grade, description of the course or work covered, performance, an indication of student effort and teacher comment.

These descriptions of learning, Achievement Standards, come from the Australian Curriculum and must be reported against.

The Work Habits are set in the template. For high schools this is provided for each subject; in primary schools this is represented as effort in learning area per subject.

Teachers write this section.

On the final page of the report is the Personal and Social Capability table which is drawn from the General Capabilities in the Australian Curriculum.

Personal and Social Capability:

Social Awareness and Social Management	R	S	U	C
Demonstrates respect for others				✓
Appreciates different points of view			✓	
Develops respectful relationships		✓		
Collaborates with peers	✓			
Self-Awareness and Self-Management	R	S	U	C
Recognises and expresses emotions appropriately			✓	
Seeks assistance when required			✓	
Works towards learning goals			✓	
Manages time effectively			✓	
Works independently and shows initiative			✓	

R = Rarely, S = Sometimes, U = Usually, C = Consistently



LYNEHAM HIGH SCHOOL

Care Quality Creativity



ACT
Government
Education

2019 Student School Satisfaction Survey **Information for parents and carers**

I am writing to request the participation of your child/ren in an important survey to be conducted online during class time in August. The survey results will contribute to our school improvement processes and will also be used in public interest research projects and longitudinal studies aimed at improving the quality of services in the ACT.

The survey includes general satisfaction items together with the school climate module, which covers relationships with other students and teachers, connection to the school, academic emphasis, student well-being, support, safety and engagement in learning. This module is part of a longitudinal study being conducted in partnership with researchers at the Australian National University. Student identification numbers will be used at the start of the survey to confirm the identity of students and to enable survey responses to be linked over time and with administrative and performance data. Linking data in this way will help researchers to assess the relationship between improvements in school climate and educational outcomes and enable a more informative understanding of patterns over time. No personal information will be provided to any school or college.

In addition to the satisfaction survey, year 7 students will be asked to complete a separate health survey as a pilot of the Year 7 Health Check Program (the Y7HC Program). This new program is led by ACT Health with the aim of protecting young people's health by monitoring risk factors for chronic diseases. The Education Directorate is conducting the Year 7 health survey on behalf of ACT Health. This separate anonymous survey includes questions about nutrition, including fast food and soft drink consumption, physical activity, use of active travel and screen time.

The Australian National University and the Education Directorate will handle all personal information in accordance with the Territory Privacy Principles set out in the *Information Privacy Act 2014*. Details about how personal information is stored and used are available in our *Privacy Policy* (available at <http://education.act.gov.au>).

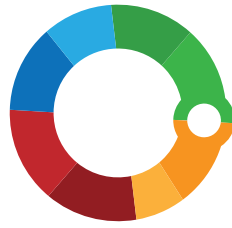
The participation of all students in years 4 to 12 will be extremely useful and valuable in finding out what we do well and where we can improve. The survey will take about 20 minutes to complete.

If having read the information above you **do not want** your child/ren to participate in the voluntary satisfaction survey and/or year 7 health survey please contact the front office on 6142 1176 or via email to lynehamhs@ed.act.edu.au by the **9 August 2019** so that we can exclude them from the survey/s.

Julie Collins
Acting Principal

Lyneham High School
2 August 2019

CHANGE IS
COMING!



**MY SCHOOL
CONNECT**

IS OUR NEW ONLINE PROVIDER!



1. DOWNLOAD THE MY SCHOOL CONNECT APP
OR VISIT [MYSCHOOLCONNECT.COM.AU](https://myschoolconnect.com.au)



2. CREATE YOUR ACCOUNT



3. ADD YOUR STUDENT
INFORMATION



4. TOP UP YOUR ACCOUNT



5. START ORDERING!



6. FOR ADDITIONAL INFORMATION
VIEW OUR HELPFUL VIDEOS [HERE](#)

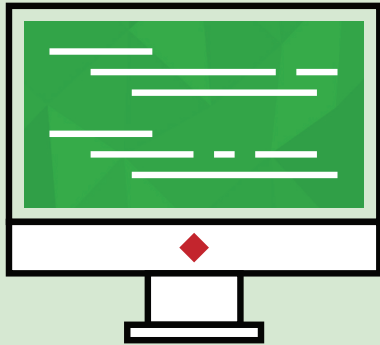
STUDENTS CAN ORDER
LUNCH VIA THE APP

ORDERING VIA THE MY
SCHOOL CONNECT APP
MAKES LIVES EASIER FOR
PARENTS AND STUDENTS!



OUR SCHOOL TUCKSHOP IS NOW **ONLINE!**

Download the free app or access www.myschoolconnect.com.au

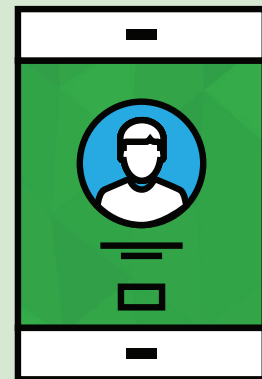


1. REGISTER YOUR ACCOUNT

Register on any device, simply login to www.myschoolconnect.com.au and click on "Create Account", follow the prompts to add your email and password.

2. ADD YOUR STUDENT

And make sure that you select your school and classroom details.



3. SELECT "TOP UP"

To add money to your account via Credit Card or Paypal, you can choose Direct Deposit but allow 3-5 working days to process prior to ordering. You can also pay as you go, simply skip the pop up screen for adding funds and start ordering.

(Please note Merchant Fees applies to Credit Card or Paypal Transactions)

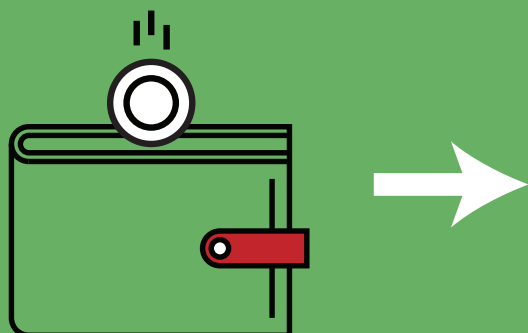


4. ORDER

To start ordering lunches simply select your Student and click "Buy Now", and you can order for the day, week. It's that simple!

5. CHECKOUT

Once you have completed your order, view your order summary in the "cart" and proceed to "checkout". Select your preferred form of payment and submit, all orders are confirmed via email.



NOTE ON PAID ORDERS

Note that only paid orders will be sent to your canteen, not those still sitting in your cart. To start ordering lunches simply select your Student and click "Buy Now", and you can order for the day, week. It's that simple!



www.myschoolconnect.com.au



My School Connect has a 7 day a week Support Line, contact 1300 030 915



PRIVACY POLICY

Updated July, 2018

This following document sets forth the Privacy Policy for the My School Connect website, <http://myschoolconnect.com.au> and our mobile applications.

It does not apply to, and we are not responsible for, the use of, or the protection of information provided to, other websites or services linked to our website or that you use to access our website, applications or services.

My School Connect is committed to providing you with the best possible customer service experience. My School Connect is bound by the Privacy Act 1988 (Cth), which sets out a number of principles concerning the privacy of individuals.

Collection of your personal information

There are many aspects of the site which can be viewed without providing personal information, however, for access to create a store or make purchases you are required to submit personally identifiable information. This may include but not limited to a unique username and password, or provide sensitive information in the recovery of your lost password. It may include information about your children at the school, and credit card information.

Sharing of your personal information

We may occasionally hire other companies to provide services on our behalf, including but not limited to handling customer support enquiries, processing transactions or customer freight shipping. Those companies will be permitted to obtain only the personal information they need to deliver the service. My School Connect takes reasonable steps to ensure that these organisations are bound by confidentiality and privacy obligations in relation to the protection of your personal information.

Use of your personal information

We may use the information we collect from you when you register, make a purchase, sign up for our newsletter, respond to a survey or marketing communication, surf the website, or use certain other site features in the following ways:

- To personalise your experience and to allow us to deliver the type of content and product offerings in which you are most interested.
- To improve our website in order to better serve you.
- To allow us to better service you in responding to your customer service requests.
- To administer a contest, promotion, survey or other site feature.
- To quickly process your transactions.
- To send periodic emails regarding your order or other products and services.
- To follow up with them after correspondence (live chat, email or phone inquiries)

For each visitor to reach the site, we expressly collect the following non-personally identifiable information, including but not limited to browser type, version and language, operating system, pages viewed while browsing the Site, page access times and referring website address. This collected information is used solely internally for the purpose of gauging visitor traffic, trends and delivering personalised content to you while you are at this Site.

From time to time, we may use customer information for new, unanticipated uses not previously disclosed in our privacy notice. If our information practices change at some time in the future we will use for these new purposes only, data collected from the time of the policy change forward will adhere to our updated practices.

Event Organisers are not bound to treat your information in accordance with this Policy and you agree that we are not responsible for their actions. Please review the relevant Event Organiser's privacy policies and terms and conditions before providing your Personal Information in relation to a particular booking, donation or registration.

Protection of your personal information

Our website is scanned on a regular basis for security holes and known vulnerabilities in order to make your visit to our site as safe as possible.

Your personal information is contained behind secured networks and is only accessible by a limited number of persons who have special access rights to such systems, and are required to keep the information confidential. In addition, all sensitive/credit information you supply is encrypted via Secure Socket Layer (SSL) technology.

We implement a variety of security measures when a user places an order enters, submits, or accesses their information to maintain the safety of your personal information.

All credit card transactions are processed through a gateway provider and are not stored or processed on our servers.

My School Connect complies with the Australian Privacy Act (1988) and the Notifiable Data Breaches (NDB) scheme (Part IIIC of the Privacy Act 1988).

In line with the NDB, My School Connect has a data breach policy in place. In the event of a serious data breach, My School Connect will notify the Office of the Australian Information Commissioner and the affected individuals where required. Notification of a data breach may take the form of an email or a notice on our website.

Do we use 'cookies'?

Yes. Cookies are small files that a site or its service provider transfers to your computer's hard drive through your Web browser (if you allow) that enables the site's or service provider's systems to recognise your browser and capture and remember certain information. For instance, we use cookies to help us remember and process the items in your shopping cart. They are also used to help us understand your preferences based on previous or current site activity, which enables us to provide you with improved services. We also use cookies to help us compile aggregate data about site traffic and site interaction so that we can offer better site experiences and tools in the future.

- We use cookies to:
- Help remember and process the items in the shopping cart.
- Understand and save user's preferences for future visits.
- Compile aggregate data about site traffic and site interactions in order to offer better site experiences and tools in the future. We may also use trusted third-party services that track this information on our behalf.

You can choose to have your computer warn you each time a cookie is being sent, or you can choose to turn off all cookies. You do this through your browser settings. Since browser is a little different, look at your browser's Help Menu to learn the correct way to modify your cookies.

If users disable cookies in their browser:

If you turn cookies off, Some of the features that make your site experience more efficient may not function properly. Some of the features that make your site experience more efficient and may not function properly.

Third-party disclosure

We do not sell, trade, or otherwise transfer to outside parties your Personally Identifiable Information unless we provide users with advance notice. This does not include website hosting partners and other parties who assist us in operating our website, conducting our business, or serving our users, so long as those parties agree to keep this information confidential. We may also release information when it's release is appropriate to comply with the law, enforce our site policies, or protect ours or others' rights, property or safety.

However, non-personally identifiable visitor information may be provided to other parties for marketing, advertising, or other uses.

Third-party links

Occasionally, at our discretion, we may include or offer third-party products or services on our website. These third-party sites have separate and independent privacy policies. We therefore have no responsibility or liability for the content and activities of these linked sites. Nonetheless, we seek to protect the integrity of our site and welcome any feedback about these sites.

Google

Google's advertising requirements can be summed up by Google's Advertising Principles.

They are put in place to provide a positive experience for users.

<https://support.google.com/adwordspolicy/answer/1316548?hl=en>

We have not enabled Google AdSense on our site but we may do so in the future.

How does our site handle Do Not Track signals?

We honour Do Not Track signals and Do Not Track, plant cookies, or use advertising when a Do Not Track (DNT) browser mechanism is in place.

Does our site allow third-party behavioural tracking?

It's also important to note that we do not allow third-party behavioural tracking

CAN SPAM Act

The CAN-SPAM Act is a law that sets the rules for commercial email, establishes requirements for commercial messages, gives recipients the right to have emails stopped from being sent to them, and spells out tough penalties for violations.

- We collect your email address in order to:
- Send information, respond to inquiries, and/or other requests or questions
- Process orders and to send information and updates pertaining to orders.
- Send you additional information related to your product and/or service
- Market to our mailing list or continue to send emails to our clients after the original transaction has occurred.

To be in accordance with CANSPAM, we agree to the following:

- Not use false or misleading subjects or email addresses.
- Identify the message as an advertisement in some reasonable way.
- Include the physical address of our business or site headquarters.
- Monitor third-party email marketing services for compliance, if one is used.
- Honour opt-out/unsubscribe requests quickly.
- Allow users to unsubscribe by using the link at the bottom of each email.

If at any time you would like to unsubscribe from receiving future emails, you can follow the instructions at the bottom of each email and we will promptly remove you from ALL correspondence.

Changes to this Privacy Policy

My School Connect reserves the right to make amendments to this Privacy Policy at any time. If you have objections to the Privacy Policy, you should not access or use the Site.

Accessing Your Personal Information

You have a right to access your personal information, subject to exceptions allowed by law. If you would like to do so, please let us know. You may be required to put your request in writing for security reasons. My School Connect reserves the right to charge a fee for searching for, and providing access to, your information on a per request basis.

Contacting us

My School Connect welcomes your comments regarding this Privacy Policy. If you have any questions about this Privacy Policy and would like further information, please contact us by any of the following means during business hours Monday to Friday.

Call: 1300 030 915

Post: Attn: Privacy Policy

My School Connect

3/3 Levida Drive Carrum Downs VIC 3201

E-mail: support@myschoolconnect.com.au



Healthy Kids Canteen Menu Lyneham High School

Order online at myschoolconnect.com.au

Term 3
2019

Daily hot specials

Baguette sub - meatballs & cheese	\$5.00
Toasted wraps (chicken & cheese, veggie)	\$4.50
Burgers (beef, chicken & veggie)	\$5.50
Baguette sub (crispy chicken tender)	\$5.00
Potato wedges	\$3.50
Pizza (meat, margherita, chicken)	\$4.00
Spaghetti bolognese	\$5.00
Veggie pasta	\$4.50
Beef burrito - wrapped in a tortilla	\$6.00
Loaded wedges - beef mince, salsa & cheese	\$5.00
Warm crispy chicken wrap	\$5.00
Warm falafel wrap	\$5.00

Sandwiches & wraps

Vegemite - with margarine	\$3.00
Cheese & tomato	\$4.00
Salad: lettuce, carrot, tomato, cucumber, beetroot	\$4.50
Egg, lettuce & mayo	\$4.80
Chicken, lettuce & mayo	\$4.80
Chicken & salad	\$5.00
Ham & salad	\$5.00
Chicken caesar	\$6.00

Extras for sandwiches & wraps

Lettuce, beetroot, carrot, cucumber, tomato	\$0.60
Mayo, hommus	\$0.60
Rolls	\$1.00
Cheese, ham, chicken, egg, avocado	\$1.20

Toasted sandwiches/foccacia

Cheese	\$4.00
Cheese & tomato	\$4.00
Ham & cheese	\$4.80
Chicken, cheese & tomato	\$5.00
Ham, cheese & tomato	\$5.00

Snacks

Piece of fruit	\$1.50
Cheese and crackers	\$2.50
Koala Popcorn (lightly salted, BBQ or chicken)	\$2.50
Yoghurt (assorted flavours)	\$2.00
Berry muffins	\$2.00
Banana bread	\$1.50
Chocolate mousse cup	\$2.00

Drinks

Water: 600ml	\$2.00
Mt Franklin sparkling water	\$3.50
Juice (tropical, apple)	\$2.00
Plain milk: 300ml	\$2.00
Plain milk: 500ml	\$3.00
Flavoured milk (choc, strawberry): 300ml	\$3.00
Flavoured milk (choc, strawberry): 500ml	\$4.50
Dare Espresso	\$3.50
Glee lightly sparkling juice (blackcurrant, tropical, raspberry)	\$3.00
Up & Go (chocolate, caramel)	\$2.50
Hot chocolate	\$2.00