



Lyneham High School

Open Night 2019

WELCOME



A bit about LHS ...

Our students and families are diverse and bring cultural richness to our learning community. We come from over the road, across the ACT and from around the world!

- **Current enrolment of 1104 students**
- 62% of students live within our PEA - this is growing rapidly!
- 30% LBOTE students (Language Background Other Than English)
- 21% of our students were born overseas (50 countries)



Our school values ...

CARE

QUALITY

CREATIVITY

CARE





Student Support Services

- Student Wellbeing
- Student Support
- Year Teams – Executive teacher, Yr Co and assistant Yr Co
- School Psychologists – full time
- Youth Support Worker – full time
- School Health Nurse – 2 days
- Menslink counsellors – 1 day



STAR Program



DARE Program



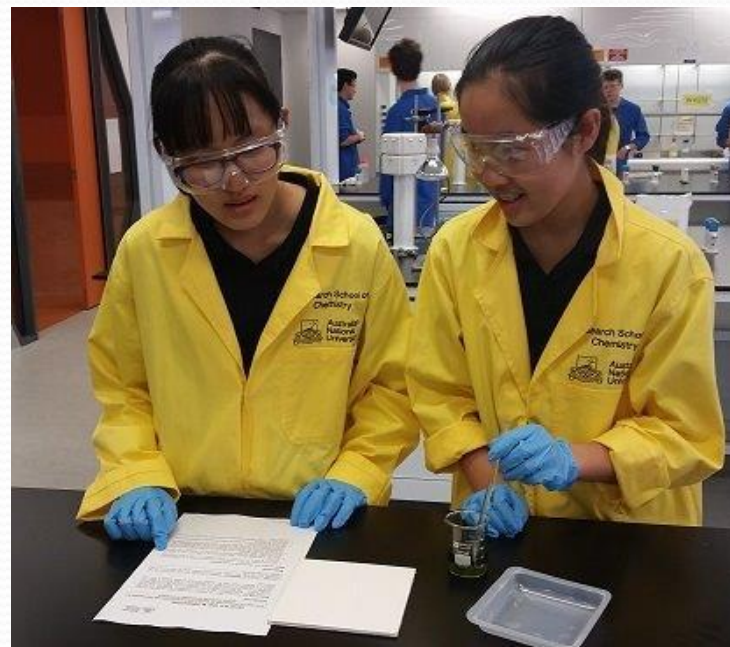
Transition into Year 7 2020

- Year Coordinator (Bronwyn Darragh - Science)
Assistant Coordinator (Franceska Nagy - Music)
- Executive Teacher (Year 7 - TBA)
- Home Group Teachers
- Orientation day in Term 4 (Thursday 24 October 2019)
- Day 1 2020 - Year 7 only (Monday 3 February 2020)
- Year 10 Peer Support leaders
- Year 7 Camp

Year 7 Camp



QUALITY



Year 7 Curriculum

All students study

- English
- Mathematics
- Science
- Humanities and Social Sciences (HaSS)
- Health & PE
- Language (French or Indonesian)
- Art / Technology - rotation of units in Art, Drama, Music, Computing, Food and Fabric and Technology
- Band (if selected)

LEAP *Lyneham Enriched Academic Program*

Information and the Special Program Application form can be found on our website.

A prospective student must be offered enrolment at Lyneham High School before being considered for this special program.



SEAL *Sporting Excellence @ Lyneham*

SEAL Information Session for 2020 Enrolments

Tonight at 7:15pm in the Hall



Disability Education

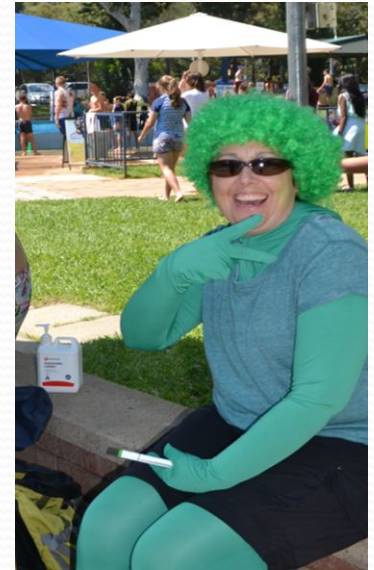
- Learning Support Unit (LSU)
- Learning Support Centre (LSC)
- Inclusion Support Program (ISP)

Placement into our Disability Education program is a centralised process through the ACT Education Directorate.

Please speak with the School Psychologist at your child's primary school for more details.



Quality Staff



Opportunities ...



CREATIVITY



Band Program

Information and the Special Programs Application form can be found on our website.

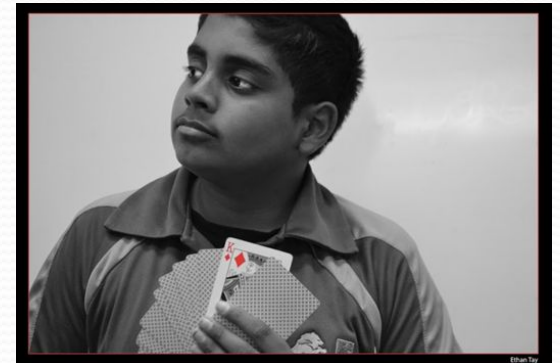
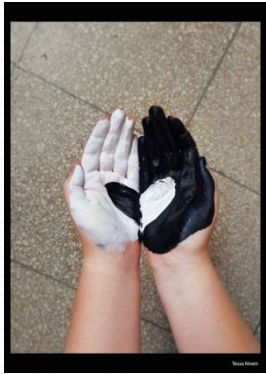
A prospective student must be offered enrolment at Lyneham High School before being considered for this special program.



Musical Productions



Visual Arts



ICT / Chromebooks



Enrolments

Aligned with ACT Education Directorate enrolment policy.
(See our prospectus / website for information and links)

For Year 6 students enrolling into Year 7 in 2020:

All students who reside permanently in our Priority Enrolment Area (PEA) are guaranteed an enrolment at LHS.

Lyneham receives	PEA Suburbs:	Acton	Dickson	Downer
	Lyneham	O'Connor	Turner	Watson*

* Shared PEA with Campbell High School

LHS is a Category A school

Category A schools are generally not able to accept students from out of their area primarily due to their capacity for students both now and in the near future.

These schools will only consider applications from out of area students against the following criteria, in the order of priority.

1. **legal considerations** where a court order identifies that a student needs to attend a specific school
2. **exceptional circumstances based on student wellbeing** which mean the child cannot attend the PEA school and must attend the school they have applied for. Where a student cannot attend the PEA school (due to **compelling (exceptional) circumstances** based on student wellbeing) but does not have to attend a specific alternative school, the family will be supported to consider options at schools that are able to accommodate out of area enrolments.
3. **Subject to capacity, siblings of concurrent students who currently reside in the ACT** (siblings include step/half and cultural siblings of current students that may now be out of area). Subject to capacity, siblings (residing in the ACT outside the PEA) of children that are enrolled in, and concurrently attending an ACT public school, will be offered a place at the school attended by their sibling.

This comes directly from the ACT Education Directorate website



NSW Student Enrolments

NSW families wishing to enrol in a Canberra Public School will be offered a place at a selection of schools in either Belconnen or Tuggeranong.

Lyneham High School will not generally be able to enrol siblings of concurrently enrolled NSW resident students, unless they meet the exceptional circumstances criterion.

Please visit the ACT Education Directorate website for more details.

Enrolment Procedure

An Online Enrolment Form must be submitted by:

5:00pm Friday 7 June 2019

The Online Enrolment Form is accessed via the ACT Education Directorate website:

https://www.education.act.gov.au/school_education/enrolling_in_an_act_public_school

Make sure you:

- Select enrolment for 2020 when completing the form.
- Make sure you list a first, second and third school preference.
- Ask for help if you don't have access to the internet and/or you need support to complete the Online Enrolment Form.

When will I hear about my application?

If you apply by 7 June 2019, you will receive an email from a school in response to your application between

Monday 29 July and Friday 2 August 2019.

If you have not received an email by Monday 5 August 2019 you should contact LHS.

Please do not make contact prior to this date.

Offer of Enrolment Procedure

Where an Offer of Enrolment is made, it is provisional until:

- Applicants attend LHS to accept the offer.
- Present relevant documentation
 - Birth certificate
 - Proof of residence (Rates notice / long term lease or rental agreement and a current utilities bill). LHS may request further information to support your proof of residency
 - Courts orders (if applicable)
 - Emergency treatment plan (if applicable)
 - Immunisation record

Unsuccessful Applications

- Unsuccessful applications will be sent to the second preference school listed who will consider your application using the same criteria identified by the ACT Education Directorate.
- If no second preference school is listed, the application will be forwarded to your PEA school.
- There are opportunities to seek a review or access an appeal process. (see the ACT Education Directorate website)
- Please make sure you follow procedures and meet deadlines.

Special Programs

BAND, LEAP & SEAL:



If you are currently living outside of our Priority Enrolment Area (PEA) and do not meet the exceptional circumstances criterion, you will not be offered an enrolment at Lyneham High School and consequently will not be eligible for a place in any of our Special Programs.

Special Programs

BAND, LEAP & SEAL:



If you will be residing in our Priority Enrolment Area (PEA)
at the beginning of the 2020 school year

OR

You have applied for enrolment at Lyneham High School
against the exceptional circumstances criterion

You are welcome to complete a Special Programs
Application. Detailed information for each Special Program
can be found on the Lyneham High website.

Special Programs - Application

Note the important dates for our Special Programs

- Band, LEAP and SEAL applications open **9:00am Wednesday 8 May 2019 (tomorrow morning)**
- Applications close **5:00pm Monday 20 May 2019**

**Applications for Special Programs are completed online.
Follow the link provided on the Lyneham High website.**

Further Information

- **LHS Prospectus** is available on the school's website
- **LHS website:** www.lynehamhs.act.edu.au
- **No access to the internet or having difficulties with the online applications?**

Contact our friendly front office staff who can provide access / support to complete these important tasks



Enjoy your visit to Lyneham High School this evening.